

## **Medicare Prescription Drug Coverage: Changes in 2007**

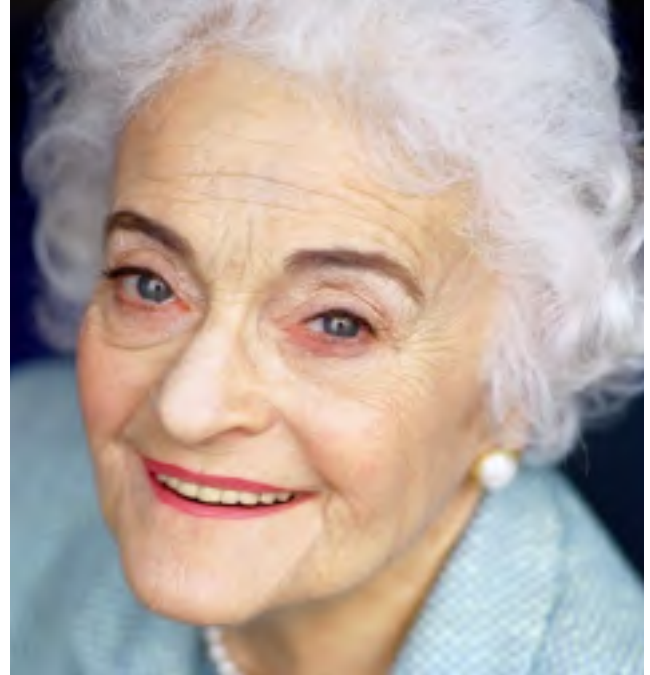
The open enrollment period for Medicare Prescription Drug Coverage is November 15-December 31, 2006. For the 2007 plan year there are changes in coverage. Also during this time, evaluate your current plan to decide if it will continue to meet your needs. Talk to your doctor, mental health practitioner, or a family member if you need help reviewing and selecting a new plan.

### **Do I still automatically qualify for Medicare Prescription Drug Coverage?**

If your income level has changed and/or you no longer qualify for Medicare and Medicaid, belong to a Medicare Savings program, or receive Supplemental Security Income (SSI), you may not automatically qualify for Medicare Prescription Drug Coverage. You may have to enroll in a new plan. A letter was mailed to you from Medicare at the end of September telling you your status.

You may qualify for the low-income subsidy, known as *Extra Help*, to help with the cost of your medications. Apply, as soon as possible, at [www.ssa.gov](http://www.ssa.gov) or by calling 1-800-633-4227. You can also go to [www.BenefitsCheckUp.org](http://www.BenefitsCheckUp.org) to check your eligibility. Your behavioral health provider can also assist you.

You may automatically qualify for Medicare Prescription Drug Coverage sometime in 2007. If so, you will be notified by Medicare.



### **Will my current Medicare Prescription Drug Plan still cover the cost of premiums and participate in the Medicare Prescription Drug Program in 2007?**

The plan you are currently enrolled in may not cover the costs of premiums or participate in the Medicare Prescription Drug Program for 2007. If you are currently in the plan you were auto-enrolled to in 2006 and this plan will not provide coverage in 2007, you will be automatically reassigned to a new plan. You will be mailed a letter from Medicare at the end of October to inform you about the auto-assignment.

If you are in a Medicare Prescription Drug Plan today that you selected, you will be mailed a letter from Medicare at the end of October to

inform you that you need to select a new plan for 2007 or pay the difference in co-pays and premiums.

Evaluate your existing plan to ensure it meets your needs. You can find plan information and also switch to a new plan by going to the Medicare Prescription Drug Plan Finder at [www.medicare.gov](http://www.medicare.gov) or by calling 1-800-MEDICARE. The National Mental Health Association also offers a consumer workbook, *Get Educated, Get Enrolled*, and a “Prepare and Compare” guide, available at [www.nmha.org/medicare](http://www.nmha.org/medicare). Your behavioral health provider can also assist you.

### **Will my co-payments be the same if there has been a change in my Medicaid coverage or treatment setting?**

If you have recently moved from a hospital to an outpatient-care setting, had a change in Medicaid providing help with Medicare premiums, or currently receive Supplemental Security Income (SSI), a letter will be mailed to you at the end of October from Medicare to let you know that your co-pays could change in the following ways:

- Cost for generic drugs will be up to \$1 or \$2.15 from \$1 or \$2
- Cost for brand name drugs will be up to \$3.10 or \$5.35 from \$3 or \$5

If you cannot afford the change in co-payment, you can ask for an exception from the drug plan. Also, your local community mental health center or mental health association can help you find alternatives or programs to sup-

### **Web Resources**

- **Medicare**, [www.medicare.gov](http://www.medicare.gov) or call 1-800-633-4227
- **State Health Insurance Program**, [www.shiptalk.com](http://www.shiptalk.com)
- **Social Security Administration, Low-income subsidy** [www.ssa.gov](http://www.ssa.gov) or call 1-800-772-1213
- **Benefits Check-Up**, [www.benefitscheckup.org](http://www.benefitscheckup.org)
- **National Mental Health Association**, [www.nmha.org](http://www.nmha.org) or call 1-800-969-6642
- **National Council for Community Behavioral Healthcare**, [www.nccbh.org](http://www.nccbh.org)

---

port the additional costs. Call the National Mental Health Association’s Resource Center at 1-800-969-6642 to locate a MHA or community mental health center in your area.